



R.M. Grauer Elementary School
 4440 Blundell Road, Richmond B.C. V7E 1G9
 604-668-6547 | grauer.sd38.bc.ca
Principal: Mr. S. Plumb
Sr. Administrative Assistant: Ms. Lisa Firth

September, 2024



Welcome back to another exciting year at Grauer Elementary! We'd like to thank our incredible parent community for your

support in getting the students ready for a successful return to school. We're looking forward to another fun-filled and rewarding year!

GRAUER STAFF 2024-2025

We are pleased to welcome back our staff along with a few new staff members who have joined the Grauer team this year. Below is our staff for the 2024-2025 school year:

- Ms. Kolosoff (Grade K)
- Ms. Lyseng (Grade K/1)
- Ms. Toffolo/Ms. Sato (Grade 1/2)
- Ms. Wong (Grade 2/3)
- Ms. Fotheringham (Grade 2/3)
- Ms. Bawa (Gr. 4/5)
- Ms. Brennan (Grade 4/5)
- Mr. Shoub (Grade 6/7)
- Mr. Hunter (Grade 6/7)
- Ms. Yoshimaru (Teacher Librarian)
- Mrs. Klomp (ELL)
- Ms. Friesen (LRT/ELL)
- Ms. Tsang (LRT/ELL)
- Ms. Chan (LRT/ELL)
- Ms. Chiu (Fine Arts/P.E.)
- Mr. Burrows (Band Teacher)
- Ms. Todd (EA)
- Ms. Vidal-Wright (EA)
- Ms. Chu (EA)
- Ms. Liu (EA)
- Ms. Leithman (Counsellor)
- Ms. Massel (Speech/Language)
- Mr. Campbell (Aboriginal Support)
- Ms. Stogan (Aboriginal Support)
- Mr. Duplassie (Aboriginal Support)
- Ms. Soper (Blended Learning)
- Ms. Magnan/Ms. Mo (StrongStart/JB4)
- Ms. Domingo (Noon-Hour Supervisor)
- Ms. Grafe (Noon-Hour Supervisor)
- Ms. Cordoso (School Nurse)
- Ms. Zhou (S.W.I.S.)
- Ms. Lowden (Custodian)
- Ms. Purewal (Custodian)
- Mr. Hoeckh (Custodian)
- Mr. Plumb (Principal)
- Mrs. Firth (Administrative Assistant)



TERRY FOX RUN

Our annual Terry Fox Run is scheduled for next week on the afternoon of Wednesday, September 18th. Please make sure your child is dressed for the

weather and has appropriate running shoes.



PAC MEETINGS

Grauer Parent Advisory Council is gearing up for an amazing 2024-25 school year! We are excited to

connect with families and to work with you to enhance your children's school experience!

Our first PAC Meeting will be held on Monday, September 23rd from 5:30 – 6:30 p.m. in the school Library. We are looking for new members, so please come and join us!

PROFESSIONAL DEVELOPMENT DAY

Our first Professional Development Day will be on Friday, September 20th. School will be closed that day as staff engage in shared learning opportunities on this Professional Development Day.

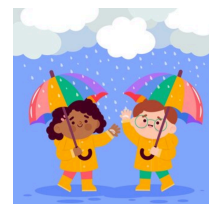


MEET THE STAFF NIGHT

Grauer School Staff is pleased to host our "Meet the Staff Night on Thursday, September 19th from 5:30 - 6:15ish p.m. This is an informal time for parents, guardians, and family members to gather and meet the staff.

WEST COAST RECESS AND LUNCH

Just a reminder that children at Grauer will be going outside rain or shine during recess and lunch breaks. We believe that being able to go outside, breathe lots of fresh oxygen and move around is very good for children's well-being and ability to learn. **Please make sure your child has adequate clothing for outside, even in the rain. Please provide them with a change of socks and shoes, rainproof coat with hood or hat and possibly an umbrella.**



NUT-FREE ZONE: Please be aware that Grauer School has many students with severe, life-threatening food allergies. All classrooms are designated nut free in order to protect

the health of our students. Please do not send nut products into the school, as the impact on a student can happen anywhere in the school. Please do not send food containing nuts to school.



R.M. Grauer Elementary School
 4440 Blundell Road, Richmond B.C. V7E 1G9
 604-668-6547 | grauer.sd38.bc.ca
Principal: Mr. S. Plumb
Sr. Administrative Assistant: Ms. Lisa Firth

EARLY WARNING, ABSENCES, AND LATE ARRIVALS

Please inform the school by telephone when your child will be late or absent due to illness or an appointment, etc. Our Early Warning line - **604-668-7890** - is available 24 hours a day for parents to leave a message. Please clearly state your child's first and last name, division and reason for absence. If no prior notice of absence is received, we will call home to determine the reason for the absence. Students arriving after 8:45 a.m. are required to enter through the main doors and check-in at the office before going to class.



STUDENT PACKAGE OF FORMS:

We have sent home a package of permission forms and information forms to be filled out and returned to your child's teacher. It is important that we have up-to-date information, including contact numbers and appropriate medical information. **These forms are due back to your child's teacher on Monday, September 23rd.**



PARKING LOT SAFETY



Please help keep our students safe by using the drop off zone for picking up and dropping off students only. If you need to come into the school, please park in a designated parking space. Also, a reminder to parents that there are **no left turns permitted before and after school when leaving our**

parking lot. Thanks for your cooperation!



- | | |
|----------|---|
| Sept. 18 | Terry Fox Run (2:00) |
| Sept. 19 | Meet the Staff Night (5:30 – 6:15) |
| Sept. 20 | Pro-D Day - School Closed |
| Sept. 23 | PAC Meeting |
| Sept. 27 | Orange Shirt Day (Wear Orange) |
| Sept. 30 | Day of Truth and Reconciliation
School Closed |
| Oct. 14 | Thanksgiving – School Closed |
| Oct. 25 | Pro-D Day - School Closed |
| Oct. 31 | Halloween |

SCHOOL HOURS 2024-2025

Classes Start 8:45 a.m.
 Recess 10:09 – 10:24 a.m.
 Lunch 11:47 – 12:39 p.m.
 School ends 2:45 p.m.



BASIC SCHOOL SUPPLIES

Once again, the school district will make available student school supplies at a cost of \$33.00. This covers the cost of such basics as exercise books, duo-tangs, paper, pencils, erasers, crayons, rulers, scrapbooks, glue, construction paper, paints and other art supplies. Other individual items required beyond those supplied by the school, such as agendas, binders, pens, marker pens, and gym clothes will be communicated to you by your child's teacher.



NATIONAL DAY FOR TRUTH AND RECONCILIATION

Monday, September 30th is the National Day for Truth and Reconciliation. Please note that **all schools will be closed on Monday,**

September 30th in observation of this important day.

STRONGSTART AT GRAUER

StrongStart is a drop-in program for pre-schoolers and their parents, and is located in Room 109 with a separate entrance (Door 3), at the top of the ramp on the north side of the school. They are open from 9:00 am to 11:30 am. More information can be found at sd38.bc.ca



MEDICATION AT SCHOOL

If your child has any allergies or medical conditions that require him/her to be given *prescribed* medication at school, please ensure you complete a Request for Administration of Medication form and return it, along with the medication, to the school office. Thank you for working with us to ensure the health and safety of our students.



R.M. Grauer Elementary School
4440 Blundell Road, Richmond B.C. V7E 1G9
604-668-6547 | grauer.sd38.bc.ca
Principal: Mr. S. Plumb
Sr. Administrative Assistant: Ms. Lisa Firth



STUDENT AND FAMILY AFFORDABILITY FUND

This past spring, the provincial

government announced a renewal of one-time funds for the *Student and Family Affordability Fund* ([link](#)). This fund is designed to assist families who require financial assistance with school-related costs in the following areas:

- School and course fees
- School supplies and course materials
- Field trips
- School-related extracurricular opportunities
- Clothing and footwear required for sports and school activities

Please email us at grauer@sd38.bc.ca if you are in need of assistance. As always, all requests will be treated with dignity and your privacy will be respected. We want to work with our families to ensure that our students, your children, have everything they need in order to be successful at school. Please do not hesitate to reach out if we can help.

Just B4 Preschool

at Richmond StrongStart Centres

JUST B4 PRESCHOOL

The Just B4 Preschool Program is run out of our StrongStart Center here at Grauer, and is specifically designed for 4-year-old children (children born in 2020). It is designed to inspire and support the creation of rich and joyful early childhood spaces. The program is emergent, play-based, and focuses on children’s natural inquiries. See below for program options and registration. Space is still available.

Just B4 – Grauer Elementary

M/W/F Program (12:30 – 3:00 pm)

Just B4 – Grauer Elementary

T/Th Program (12:30 – 3:00 pm)

Just B4 – Grauer Elementary

M/T/W/Th/F Program (12:30 – 3:00 pm)

For program costs and to apply online go to: sd38.bc.ca/Justb4